

Mangawhai Waka Ama Surf to Surf 2025

5th & 6th April - Mangawhai to Waipu Cove - Pānui 2



Ko Pukekaroro te maunga

Ko Ngati Whatua te iwi

Ko Te uri o hau te hapu

Nei ra te mihi ki a koutou

Nau mai, haere mai, whakatau mai ra i te karanga o Tangaroa.

No reira tena koutou, tena koutou, tena tatou katoa.

EVENT SUMMARY

Situated in the beautiful Kaipara region, our breathtaking playground spans the Mangawhai Estuary, the surrounding heads, the open ocean, and, for the adventurous, our surf bar. We invite teams from across Aotearoa to take part in our event.

Our race weekend features a range of competitions for paddlers of all skill levels and serves as a warmup for the Long Distance Nationals event in Wellington. Enjoy a full day of fun races, spot prizes, and prize-giving.

We warmly welcome you and your whānau to join us for this exciting inaugural event.



Mangawhai Waka Ama Surf to Surf 2025

5th & 6th April - Mangawhai to Waipu Cove - Pānui 2



EVENT SCHEDULE

NB Friday - Registration 5pm-7pm

Race 1 Saturday - W6 RELAY (15Km x 2) - ocean	
7.00am	Registration, waka drop off & safety checks
8.30am	Karakia
8.45am	Race & safety briefings
9.00am	Racing starts
9.05am	Shuttle(s) depart from Mangawhai Waka Ama Club Carpark (Waka unloading area) to Waipu Cove
When shuttles are full	Shuttle(s) will return from Waipu Cove as soon as they are full. When you finish your paddle make your way to the shuttle so you can get back to watch your team complete the race
1.00pm	Racing finishes
4.00pm	Prizegiving
4.00pm	Closing Karakia

Race 2 Saturday - W6 10Km - short course in Estuary	
12.00pm	Registration, & safety checks
1.00pm	Race & safety briefings
1.30pm	Racing starts
3.30pm	Racing finishes
4.00pm	Prizegiving
4.00pm	Closing Karakia

NB Daylight saving starts Sunday 6th - move clocks back 1 hour

Race 3 Sunday - W4 Surfing Competition	
9.00am	Registration, & safety checks
9.30am	Competition & safety briefings
9.50am	Karakia
10.00.am	Competition starts
12.00pm	Competition finishes
12.15pm	Prizegiving
12.30pm	Closing Karakia

Mangawhai Waka Ama Surf to Surf 2025

5th & 6th April - Mangawhai to Waipu Cove - Pānui 2



RACE SCHEDULE

Time	Race
9.00am (Sat)	Race 1 - W6 Mangawhai to Waipu Cove Return relay. 15km each way.
1.30pm (Sat)	Race 2 - W6 Open. 10km.
10.00am (Sun)	Race 3 - W4 Open Surf Comp

NB Tsunami alarm testing Sunday 10am

RACE WEEKEND INFORMATION

Waka Drop Off - Mangawhai Heads Rd - Open Car Park - this will be signed from the Mangawhai Heads Road roundabout.

Waka trailer Parking: After unloading your waka please vacate the area asap and park your trailer at the Campbells Park Youth Camp. This will allow others to unload.



Mangawhai Waka Ama Surf to Surf 2025

5th & 6th April - Mangawhai to Waipu Cove - Pānui 2



Car Parking: Waka trailers will be parking on the field at the Campbells Park Youth Camp. To avoid road congestion car parking is also available at the Youth Camp. Please note all other parking is under Kaipara Council management, please be considerate.

Registration - Friday 5-7pm, Saturday 7am and Sunday 8.30am. Registration is at the Mangawhai Holiday Park under the Mangawhai Waka Ama Gazebo. Drive down Alamar road past the Mangawhai Fishing and Boating Club. If it rains, registration will move into the Fishing and Boating Club.

Food: Kai is provided as part of your race entry. Coffee carts available at Mangawhai and Waipu Cove. NOTE: Shuttle's will not wait for your coffee to be ready.

Toilets: Toilets are located at Sellars reserve (end of North ave), Mangawhai Heads campground and at the Mangawhai Boating and Fishing Club.

First Aid: First Aid will be available at the Mangawhai Boating and Fishing Club and Waipu Surf Club.

Rubbish/Recycling: We encourage you to please take what you bring. However, the main rubbish and recycling station is located by the Mangawhai Boating and Fishing Club.

Alcohol/Smokefree: Alcohol, smoking, vaping and any other substance use is not permitted at this event, including all premises of the event.

Mangawhai Waka Ama Surf to Surf 2025

5th & 6th April - Mangawhai to Waipu Cove - Pānui 2



WAKA DROP OFF & SAFETY CHECKS

Waka Drop off:

- Waka drop off will be available from Friday from 5.00pm to 7.00pm and 7.00am Saturday on the event day.
- Waka drop off will be at the open car park at the end of Mangawhai Heads Road (by the Mangawhai Heads Holiday Park). Rigging on the beach front landing. (see map Below)

Safety Checks:

- All waka will have to pass a safety check and be marked before racing. Any boats not marked will not be permitted to race.



Mangawhai Waka Ama Surf to Surf 2025

5th & 6th April - Mangawhai to Waipu Cove - Pānui 2



RACE RULES

For the relay race, Mangawhai to Waipu Cove, paddlers under the age of 18 must have a Parent/Caregiver approval and signature on the waiver form.

All entrants must be familiar with the Waka Ama New Zealand race and safety rules.

Refer to the following link for more information: [Waka Ama NZ Race Rules](#)

RACE RULES

WAKA	DISTANCE	DIVISIONS	GENDER
W6	2x15km	Open, Master, Senior Master, Golden Master	Mixed (minimum of 6 females)
W6	10km	J19, Open, Master, Senior Master, Golden Master	Mixed, Male, Female

FEES

PER PERSON BY EVENT (<i>charged for <u>each</u> event entered</i>)	
Event	Cost
W6 - Relay (2x15km)	\$40.00
W6 - 10km	\$20.00
W4 - Surf	\$10.00

ONLINE ENTRIES & PAYMENT

Online entries are to be completed using the Waka Ama NZ online entry system.

- All entries to be completed through your club admin – contact your club admin to process your entry
- No entries on the day, no exceptions
- Entries close on **Friday 28th March** (*please note limited entries for our inaugural event*)
- Rosters close on **Thursday 3rd April**, rosters must be completed by close date.
- Once entered, payment can be made online to:
 - Mangawhai Waka Ama
 - 12-3094-0015345-51
 - Use your club, team name and division as your reference

Mangawhai Waka Ama Surf to Surf 2025

5th & 6th April - Mangawhai to Waipu Cove - Pānui 2



SAFETY REQUIREMENTS

- All waka must be Safety Checked
- All age divisions must wear life jackets
- All teams must have the following safety equipment for their races:
 - PFD - Personal Floatation Device (per person)
 - 2 x Bailers
 - Flare or cellphone in waterproof case
 - Spare Paddle - 2 for a W6,
 - Spray Skirt (W6)
 - Tow Rope (W6)

TEAM WAIVERS

- [Team waivers](#) must be completed by all paddlers/teams
- All paddlers U18 must have their waiver signed by their parent/guardian
- Waivers can be handed in at registration on the day
- Individual & Team waivers can be found on our event page on the Waka Ama NZ website

CONTACT INFORMATION

- All enquiries please email: mangawhaiwakaama@gmail.com
- [Facebook](#)

COURSE TIDES & MAPS

Saturday

- High tide: 2.06pm
- Low tide: 7.44am

Sunday (Daylight savings - clocks go back 1 hour)

- High tide: 2.05pm
- Low tide: 7.48am

Endangered Birds

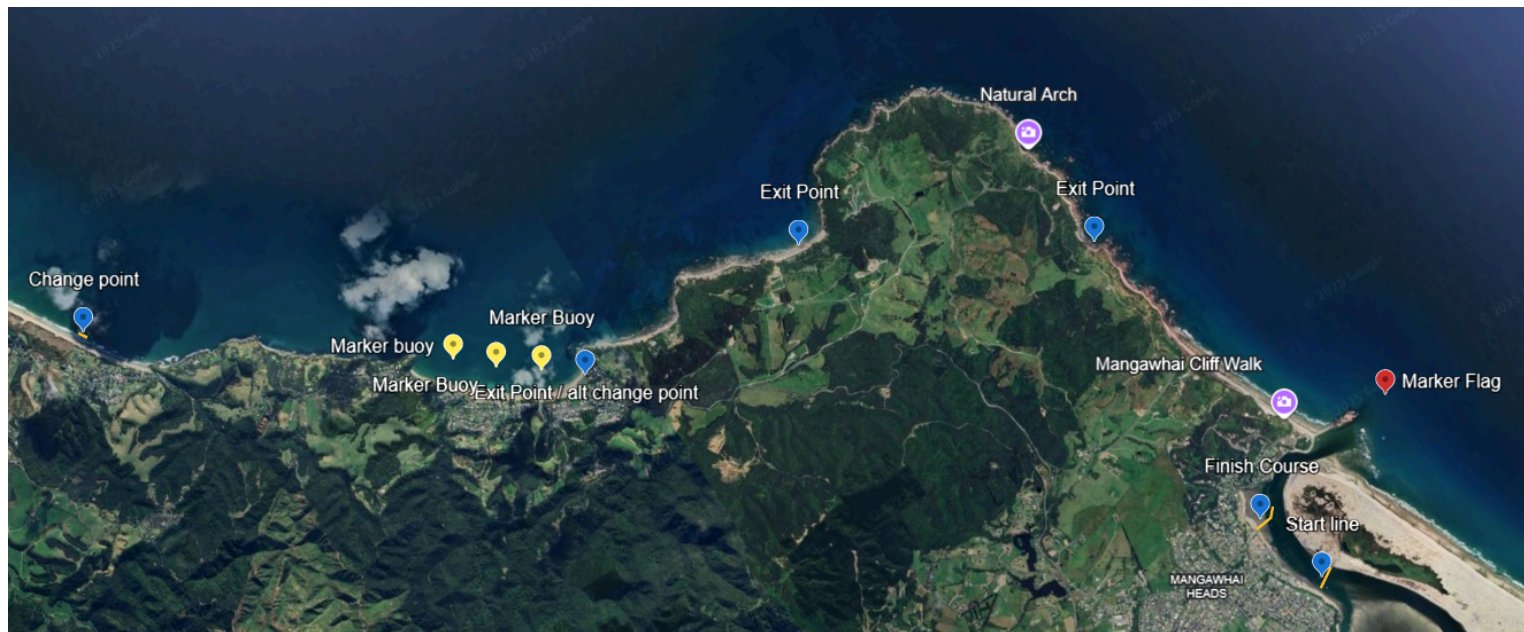
Over the estuary from the campground is a sandspit which has fledgling tara iti, a critically endangered bird. To protect this species, please avoid walking over the sandspit.

Mangawhai Waka Ama Surf to Surf 2025

5th & 6th April - Mangawhai to Waipu Cove - Pānui 2



RACE 1 MAP RELAY RETURN FROM WAIPU COVE



NB - alternate race course, if conditions do not allow bar crossing, will be a 10km loop in the estuary, including Picnic Bay. Teams to change over by start line (will be confirmed during race briefing)



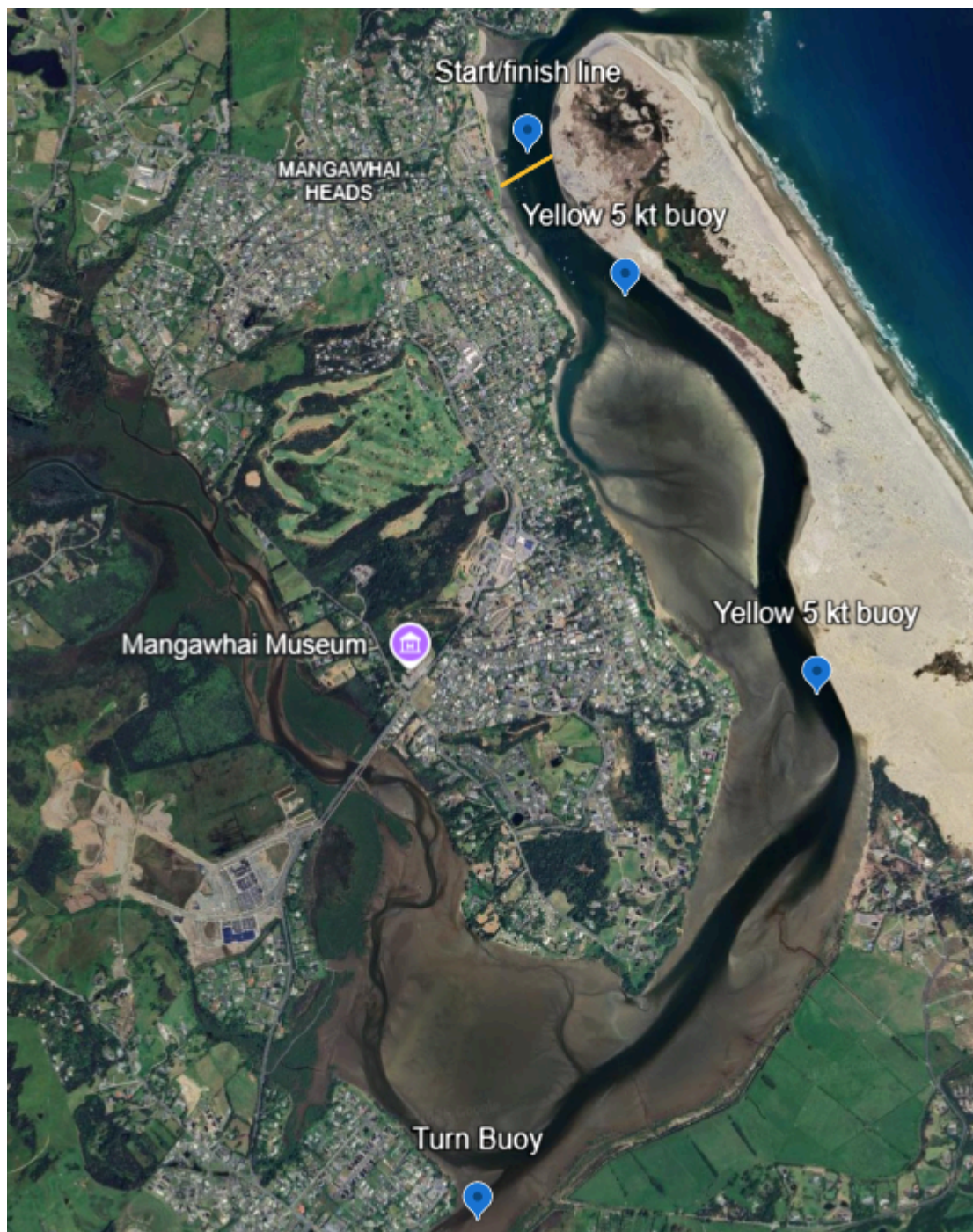
Mangawhai Waka Ama Surf to Surf 2025

5th & 6th April - Mangawhai to Waipu Cove - Pānui 2



RACE 2 MAP

Turn at top of estuary back to Mangawhai Fishing and Boating Club.



Mangawhai Waka Ama Surf to Surf 2025

5th & 6th April - Mangawhai to Waipu Cove - Pānui 2



RACE 3 OC4 Surf Challenge

